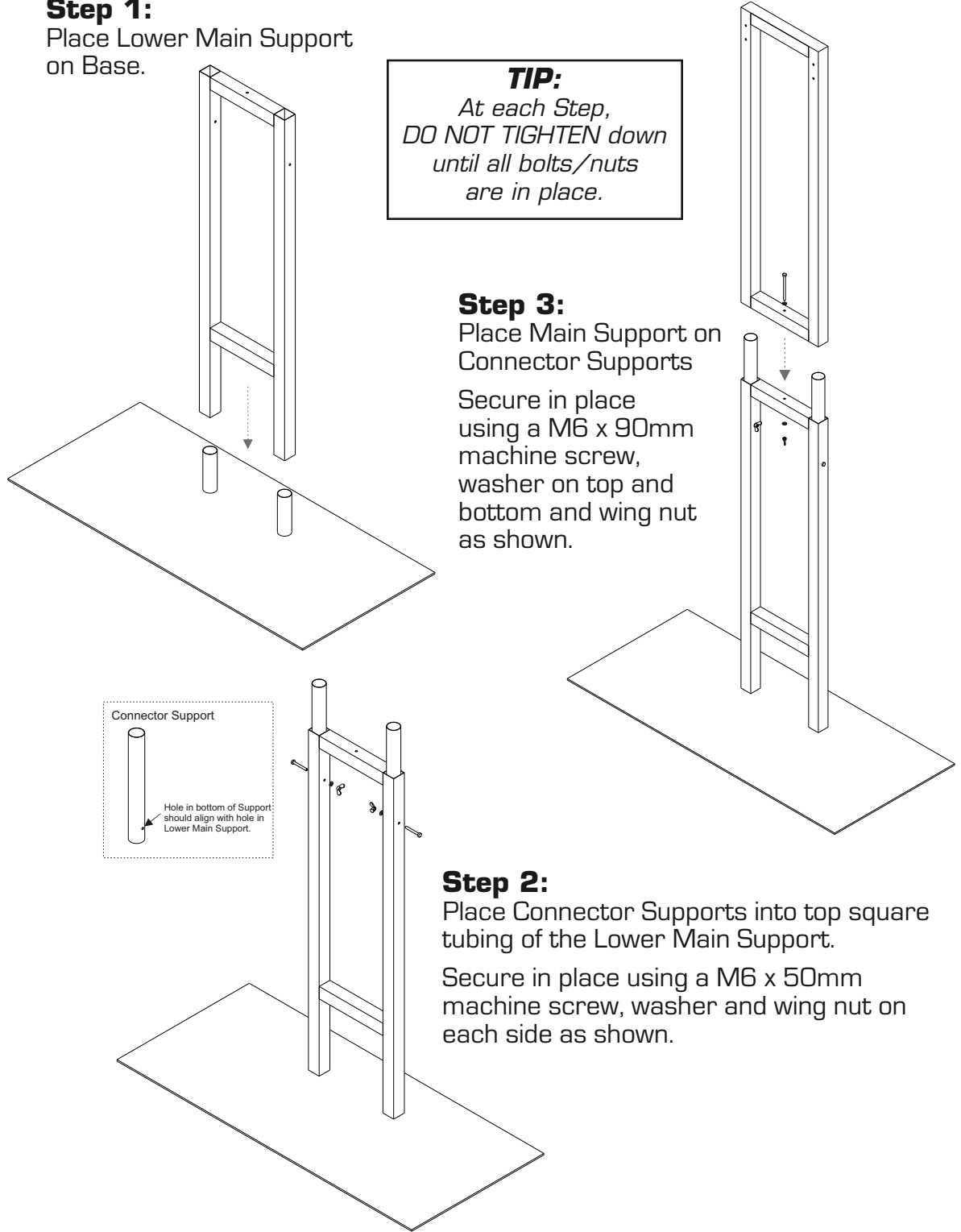


Step 1:
Place Lower Main Support
on Base.

TIP:
At each Step,
DO NOT TIGHTEN down
until all bolts/nuts
are in place.



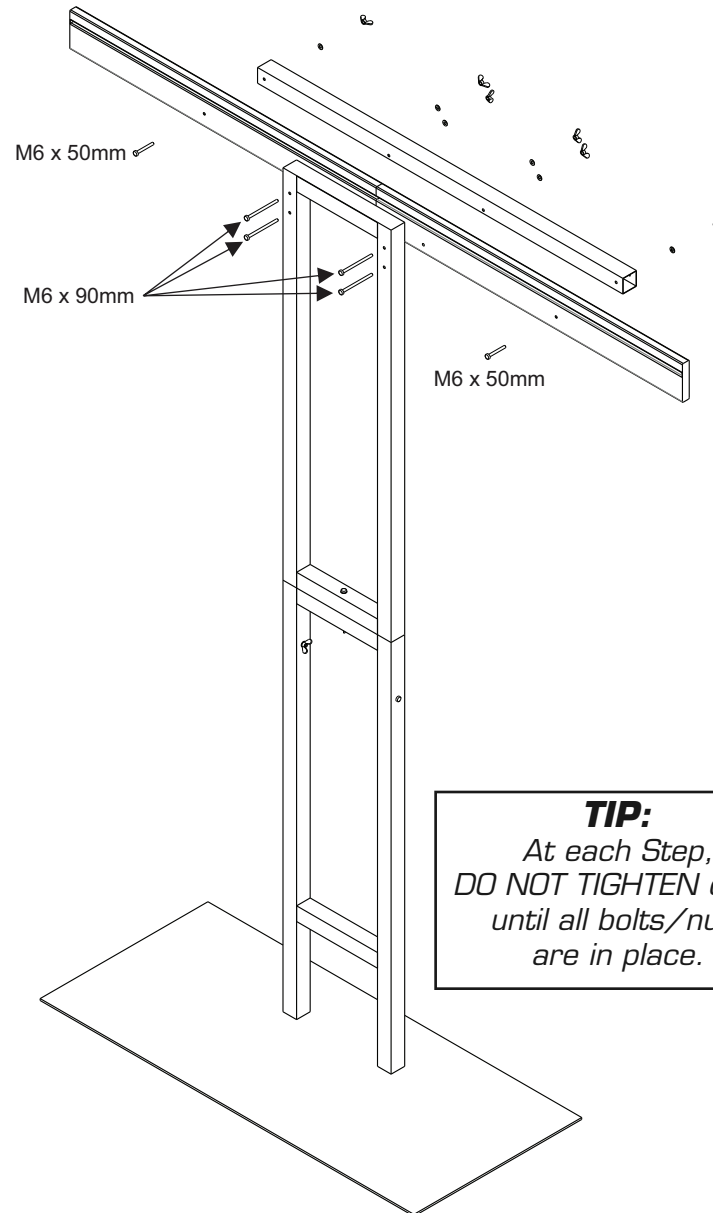
Step 3:
Place Main Support on
Connector Supports
Secure in place
using a M6 x 90mm
machine screw,
washer on top and
bottom and wing nut
as shown.

Step 2:
Place Connector Supports into top square
tubing of the Lower Main Support.
Secure in place using a M6 x 50mm
machine screw, washer and wing nut on
each side as shown.

Step 4:

Attach left and right Slat Section and Slat Reinforcement onto upper Main Support using M6 x 90mm machine screws, washers and wing nuts.

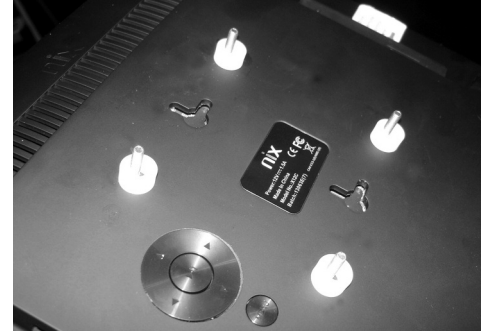
Secure outside connections of Slat reinforcement and Slat using M6 x 50mm machine screws, washers and wing nuts.



Step 5:

Attach, using velcro, the bottom half of the “One” graphic about 1/2” above the center crossbar of the Upper Main Support.

Then “Marry” the top half of the “One” graphic to the bottom half. See photo of finished POP on other side for reference.



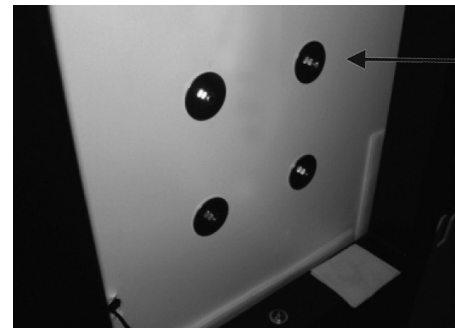
Step 6:

Attach M4 x 25mm long threaded rods (4 places) to the back of the monitor, and then place the (4) plastic bushings over the rods.



Step 7: IMPORTANT

Pull Monitor Power Cord through access hole in art and connect to monitor BEFORE securing monitor to artwork.

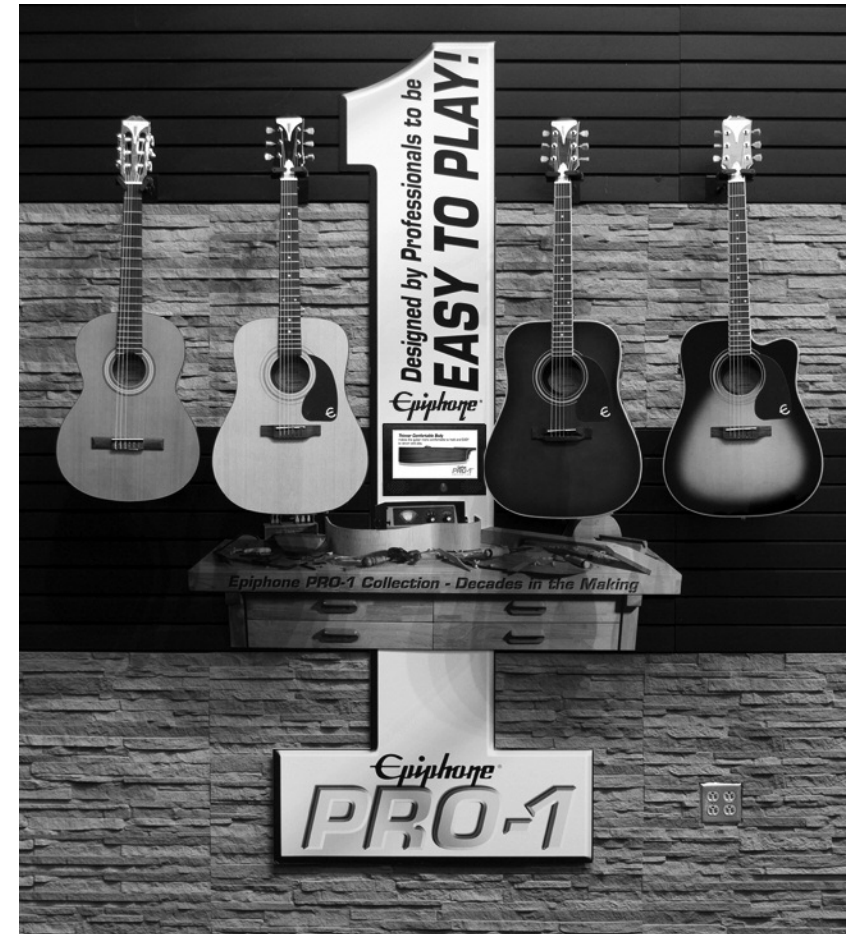


Step 8:

Secure Monitor to art by placing a 26mm diameter fender washer and M4 nut onto each threaded rod. (4 places)

Step 9:

Center & Attach, using velcro, the “Bench” art to the “One” art just below the secured Monitor. See photo of finished POP on other side for reference.



For the PRO-1 POP on Slat Wall

Start with **Steps 6, 7** and **8** at left, attaching the Monitor to the top half of the “One” graphic.

Attach top half of the “One” graphic and Monitor with velcro to slat wall. Use the photo above for reference for positioning in relation to hanging guitars

“Marry” the bottom half of the “One” graphic to the top half.

Center & Attach, using velcro, the “Bench” art to the “One” art just below the secured Monitor.